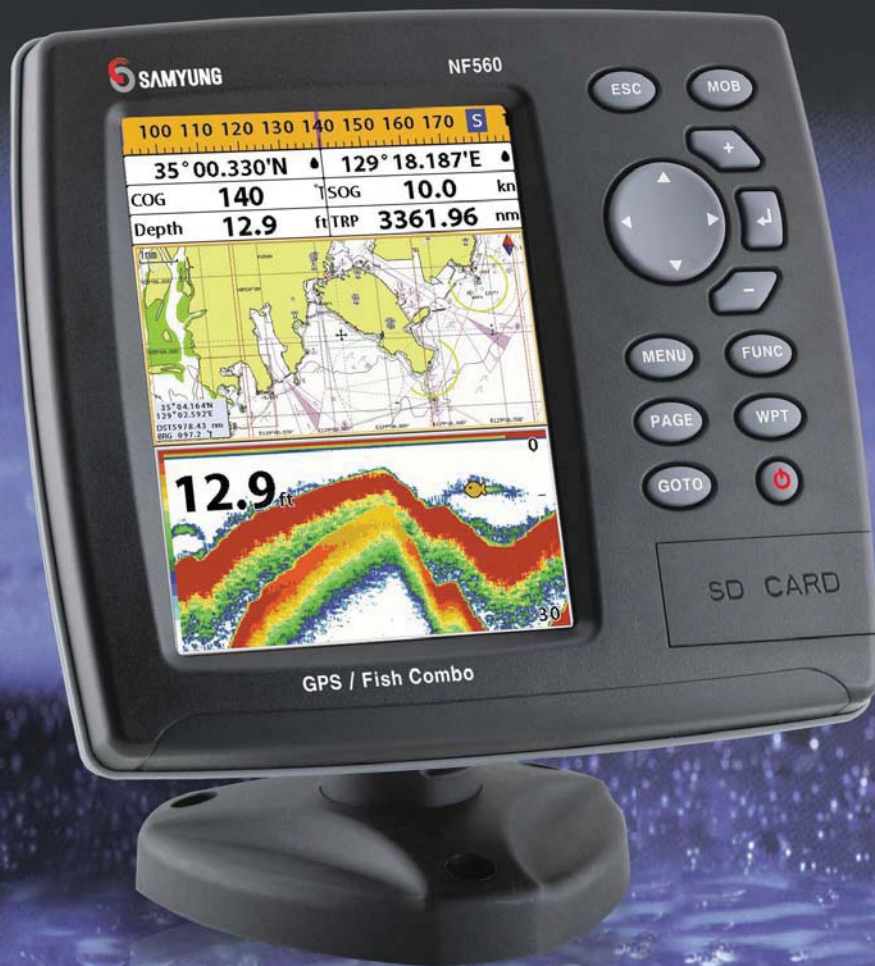


5.6" Color GPS/Combo

N560/NF560/F560



 **SAMYUNG ENC Co.,Ltd.**



- **Fully Waterproof**
- **DGPS(WAAS, MSAS, EGNOS)**

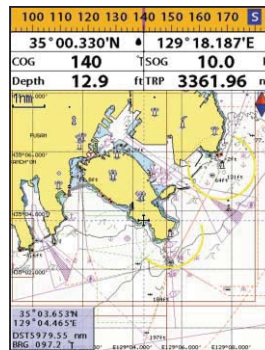


- Save a chart image on internal memory (128M)
- Save internal data on SD card
- View and print saved data on SD card

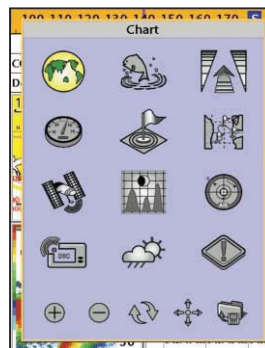
N560

5.6" GPS Color Chartplotter

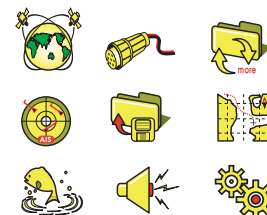
- 5.6" High resolution TFT LCD
- 10 steps adjustable LED backlight
- Internal/external GPS antenna
- NAVIONICS® GOLD using SD card
- 128MB internal memory and built-in standard Samsung chart
- Individual button for navigation GOTO and MOB
- NMEA0183 interface (AIS, NAVTEX, DSC etc.)
- Multiple languages available including English, Chinese, Russian, Thai, Malay etc.



- All NAVIONICS® GOLD features on high resolution LCD.
- AIS information on chart plotter by connecting to compatible AIS receiver (NMEA0183)



- Choose a page / function by using icon for menu
- Various icons





NF560

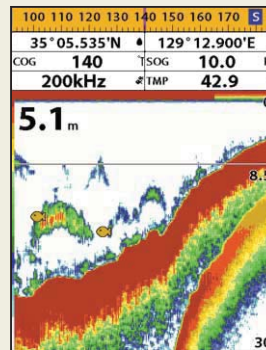
5.6" GPS Color Chartplotter+Fishfinder

- Waterproof with IPX7
- User-friendly operation type by using icon for each menu
 - 4 split screens (Chart, Data, Highway, Fish-finder)
- Adjustable bracket can be attached or detached depends on installation type
 - NMEA2000 interface (Data repeater, fuel control)
- Using dual frequency (50/200Khz) for detection of small and individual fish
 - Clearly shows fish targets close to the seabed by Split zoom/Split bottom (Output: 600W, Max. depth: 600M)

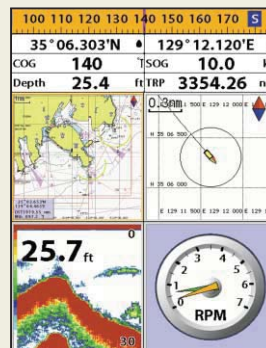
• Sunlight Viewable Screen



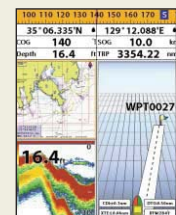
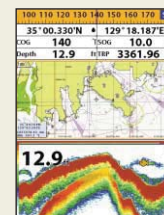
- Adjustable bracket can be attached or detached easily



- High output power 600W built-in RMS enable to distinguish a seabed up to 600m
- Dual frequency(50/200kHz) transducer (Water temperature, speed sensor)
- Fishfinder screen setting available in Auto/Manual mode and Pause/Playback mode



- Four split screen presentation available
- Display multiple functions on split screen



5.6" GPS Color Chartplotter/Fishfinder/Combo



N560

NF560

F560

Features	
Size	164 mm(H) x 183 mm(W) x 74 mm(D)
Display	5.6" diagonal, TFT color, 480 x 640 pixels
Supply voltage	10 to 34 V DC
Supply current	13.8 V, 0.9A min – no backlighting. 2A max – full backlighting.
Operating temp.	-10° to 50°C
Alarms	Arrival radius, anchor, XTE, danger, too shallow, too deep, fish, temperature, temperature rate, low battery, low fuel(optional), loss of DGPS fix, radar guard zone, dangerous AIS vessels.
Chart card	NAVIONICS® GOLD
User card	SD Card
Waypoints	Up to 5000, with default or userdefined alphanumeric names up to eight characters.
Routes	100 Routes, with up to 100 points each
Tracks	By time or distance, 10 track of 5000 points
Chart datums	216 Chart datums (see next page) One user-defined map shift.
Chart scale	0.2 to 500 nm for chart (chart dependent) down to 0.01 nm in plotter mode.
NMEA	NMEA 0183 4800, 9600, 38400 baud NMEA 2000
Depth range	- 0m to 1,500m
Sonar output	- Up to 600W RMS Daul frequency:50/200kHz
Temperature	- Range 0° to 37.7°C Resolution of 0.1°C unit

* Specification is subject to change without notice

