

Weather Facsimile Receiver

SFAX-500

NEW

5.6" Screen Display !!

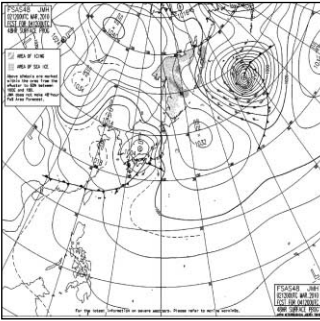


SAMYUNG ENC Co.,Ltd.

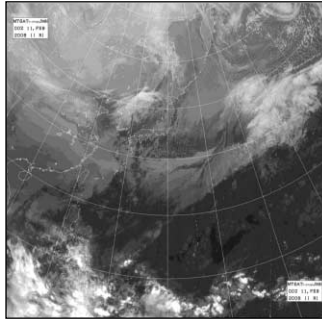
Weather Facsimile Receiver

SFAX-500

◆ Surface Analysis Chart



◆ Satellite Weather Image

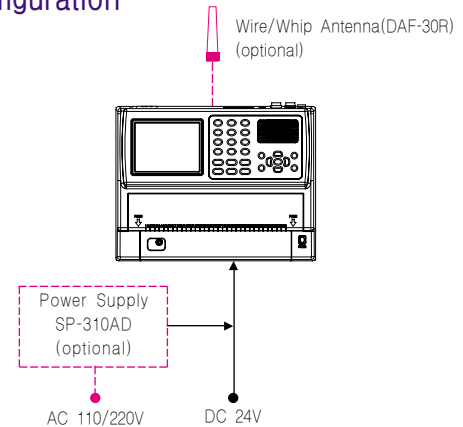


◆ Features

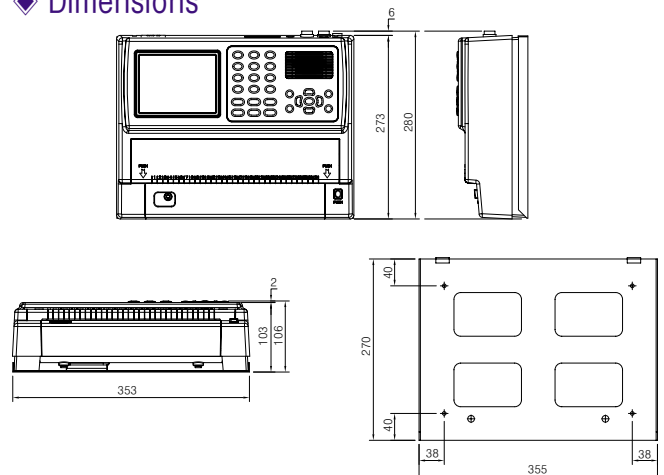
- Easy weather chart distinction by 10 inch wide printer output
- Simple setting & operation by 5.6 inch full screen color LCD display
- 4 receiving mode (automatic, manual, forced, timer programming)
- Automatic search for optimal receiving channel
- Select a station depending on GPS signal.
- Clear screen by anti-noise device.
- Receive standard weather information from WMO (World Meteorological Organization)
- Select Black, White, Gray in screen.
- Auto tune to optimize receiving quality.
- Connect to the best station by setting automatic receive channel.



◆ Configuration



◆ Dimensions



Main Unit SFAX-500 / Mounting

* Specification is subject to change without pre-notice

Specifications (SFAX-500)		
RECORD	Recording system	solid state thermal head
	Recording paper	thermo sensitive recording paper
	Effective recording width	256mm (10")
	IOC(Index of cooperation)	576 or 288
	Scanning speed	60, 90, 120, 240 RPM
	Scanner resolution	8 dots/mm
	Scanning line density	approx. 7 lines/mm, 3.5 lines/mm
	Phase matching	automatic and manual
	Halftone recording	16 steps by dither pattern
	Negative/positive recording	manual
	External receiver connect	0dBm@ 600Ω
	Operation mode	automatic, manual, forced, timer program
	Timer program channel	30 channels
	Setup data list recording	receiving frequency, timer program channel
RECEIVER	Setup data storing	Flash memory
	Self test function	recording and print test
	Automatic time correction	input via GPS data
	Image data output	display receive images on LCD(5.6"), save to SD card
	Image rejection ratio	more than 60dB
Environmental conditions	Receiving system	up-conversion, double super heterodyne, phase locked
	Frequency type	F3C
	Frequency range	500KHz ~ 25MHz
	Frequency selection	automatic and manual
	Frequency memory	100 channels
Power supply	Sensitivity	2μV (+6dBμ) or less @20dB S/N(output: -5dBm)
	Ambient temperature operation	-15°C to +55°C
	Ambient humidity	93% (40°C) or less recording is 80% or less
Power supply	Power supply	DC24 10% to +30%, 70VA or less